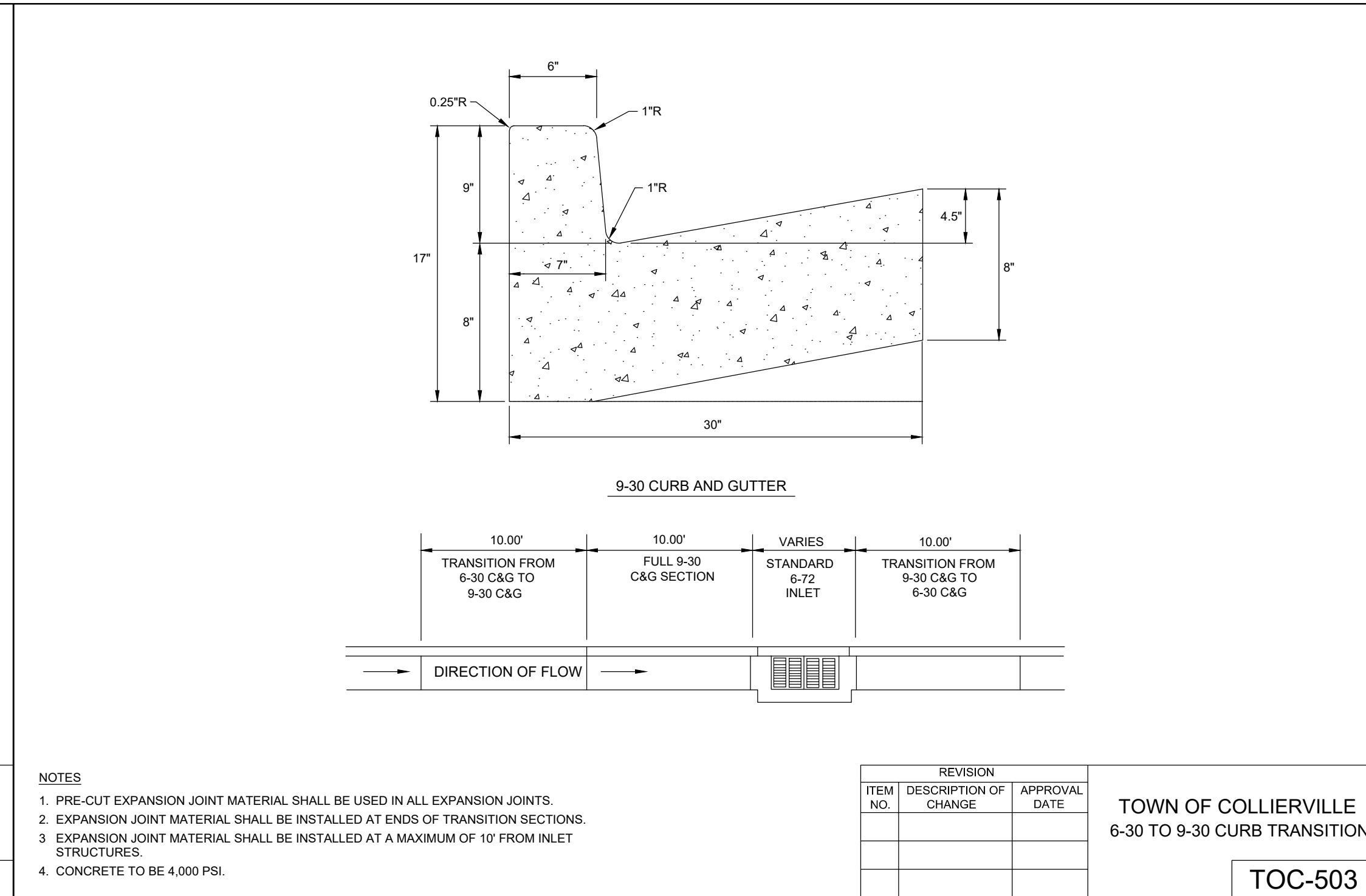


NOTES

- PRE-CUT EXP. JOINTS MATERIAL SHALL BE USED IN ALL EXP. JOINTS.
- DUMMY JOINTS SHALL BE INSTALLED AT 10 FT INTERVALS, MAXIMUM.
- EXPANSION JOINTS SHALL BE INSTALLED AT 30 FT, MAXIMUM.
- EXPANSION JOINTS SHALL BE INSTALLED AT ENDS OF RADIUS.
- EXPANSION JOINTS SHALL BE LOCATED A MAXIMUM OF 10 FT FROM INLET STRUCTURES.

REVISION		
ITEM NO.	DESCRIPTION OF CHANGE	APPROVAL DATE

TOWN OF COLLIERVILLE
6-30 CURB & GUTTER

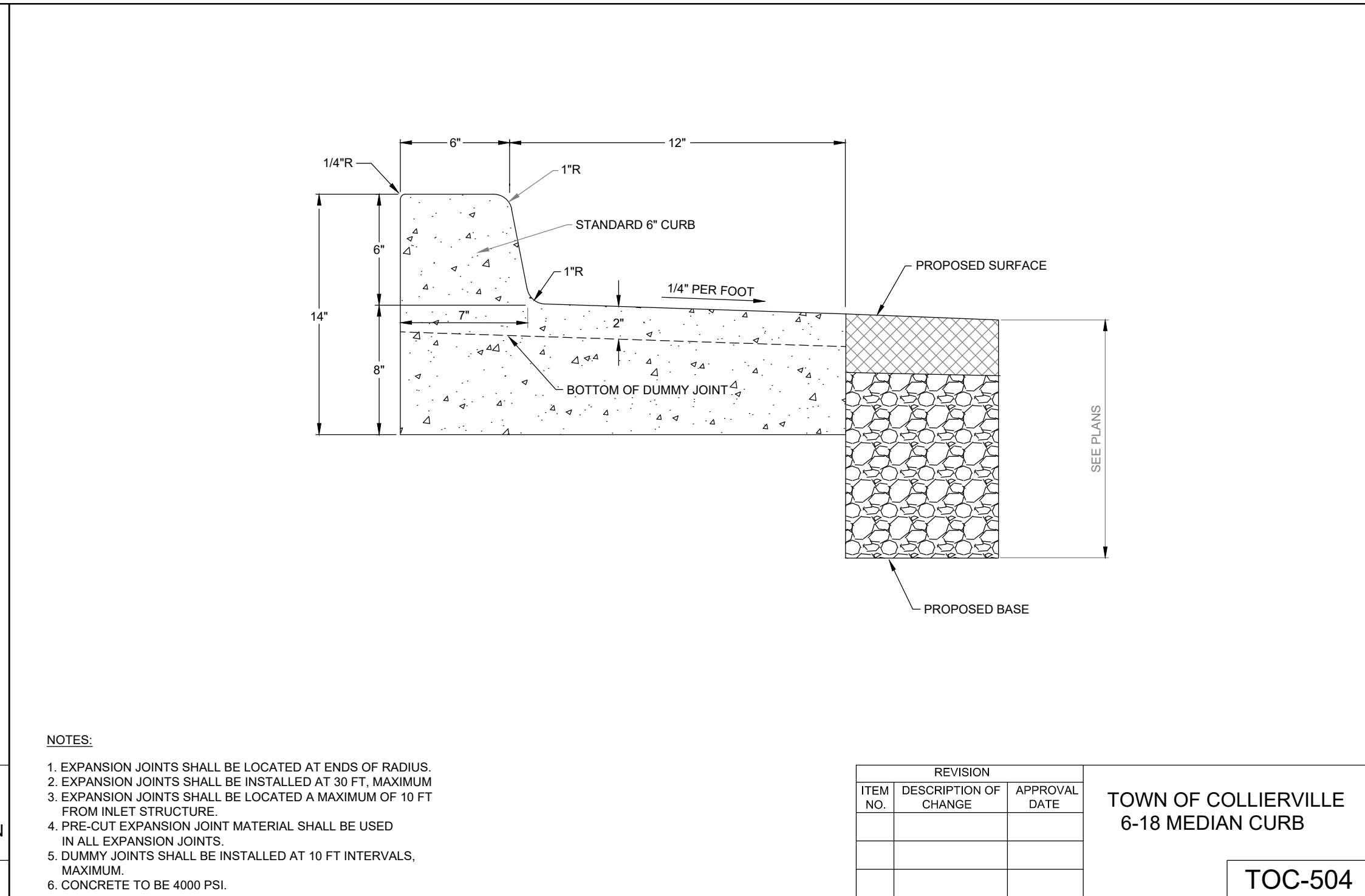


NOTES

- PRE-CUT EXPANSION JOINT MATERIAL SHALL BE USED IN ALL EXPANSION JOINTS.
- EXPANSION JOINT MATERIAL SHALL BE INSTALLED AT ENDS OF TRANSITION SECTIONS.
- EXPANSION JOINT MATERIAL SHALL BE INSTALLED AT A MAXIMUM OF 10' FROM INLET STRUCTURES.
- CONCRETE TO BE 4,000 PSI.

REVISION		
ITEM NO.	DESCRIPTION OF CHANGE	APPROVAL DATE

TOWN OF COLLIERVILLE
6-30 TO 9-30 CURB TRANSITION

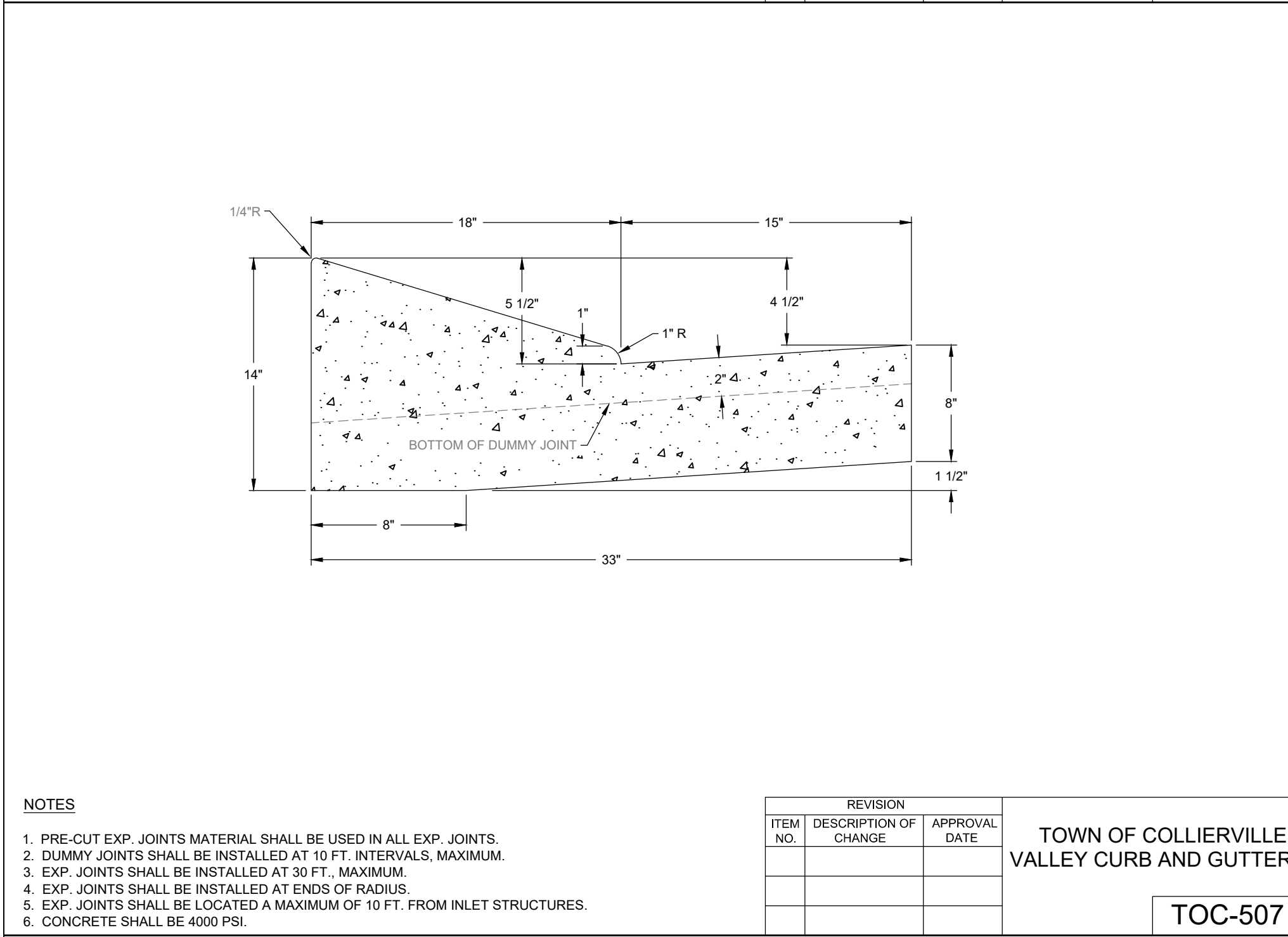


NOTES

- EXPANSION JOINTS SHALL BE LOCATED AT ENDS OF RADIUS.
- EXPANSION JOINTS SHALL BE INSTALLED AT 30 FT, MAXIMUM.
- EXPANSION JOINTS SHALL BE LOCATED A MAXIMUM OF 10 FT FROM INLET STRUCTURE.
- PRE-CUT EXPANSION JOINT MATERIAL SHALL BE USED IN ALL EXPANSION JOINTS.
- DUMMY JOINTS SHALL BE INSTALLED AT 10 FT INTERVALS, MAXIMUM.
- CONCRETE TO BE 4000 PSI.

REVISION		
ITEM NO.	DESCRIPTION OF CHANGE	APPROVAL DATE

TOWN OF COLLIERVILLE
6-18 MEDIAN CURB

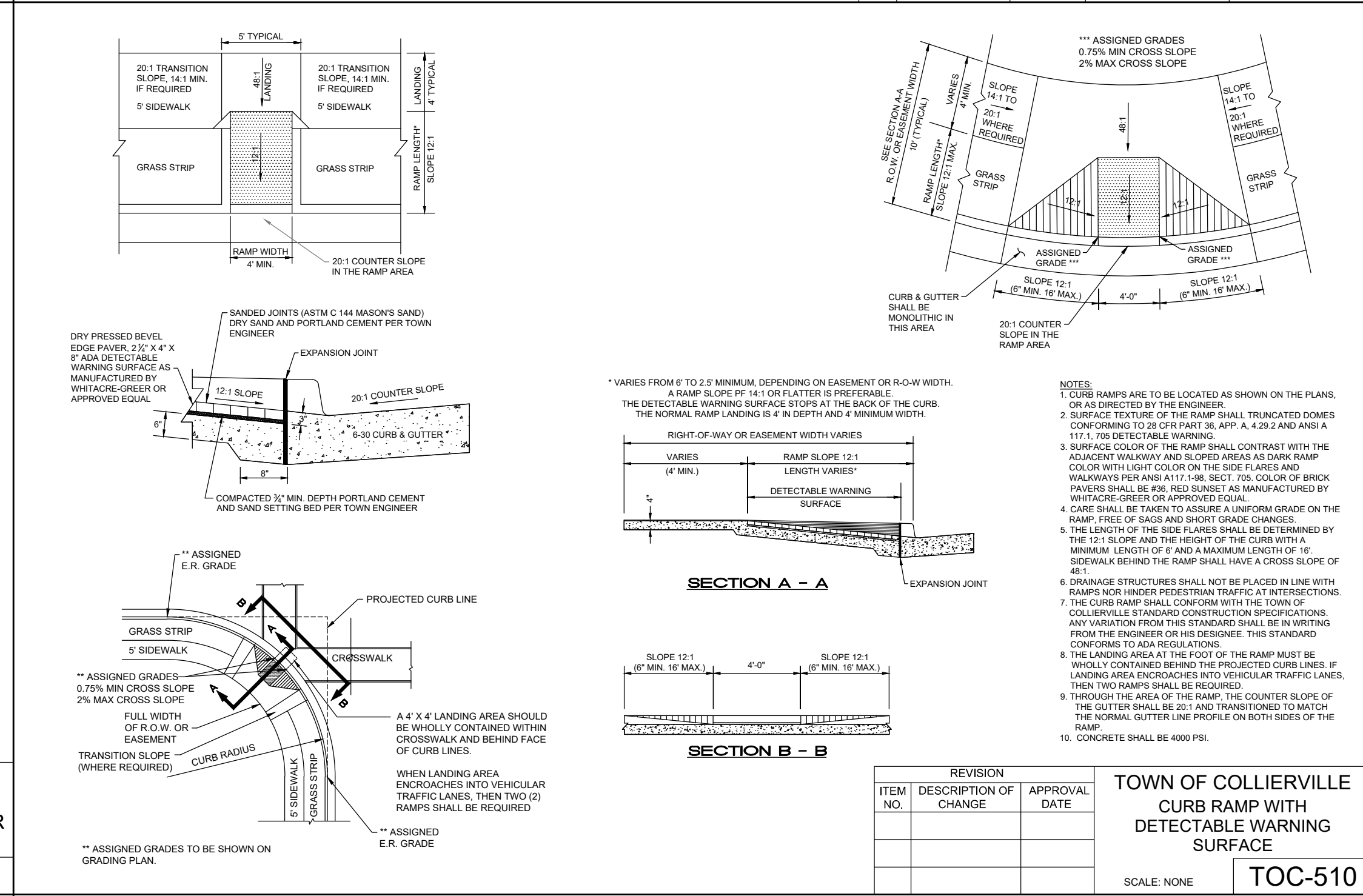


NOTES

- PRE-CUT EXP. JOINTS MATERIAL SHALL BE USED IN ALL EXP. JOINTS.
- DUMMY JOINTS SHALL BE INSTALLED AT 10 FT INTERVALS, MAXIMUM.
- EXP. JOINTS SHALL BE INSTALLED AT ENDS OF RADIUS.
- EXP. JOINTS SHALL BE INSTALLED AT ENDS OF RADIUS.
- EXP. JOINTS SHALL BE LOCATED A MAXIMUM OF 10 FT FROM INLET STRUCTURES.
- CONCRETE SHALL BE 4000 PSI.

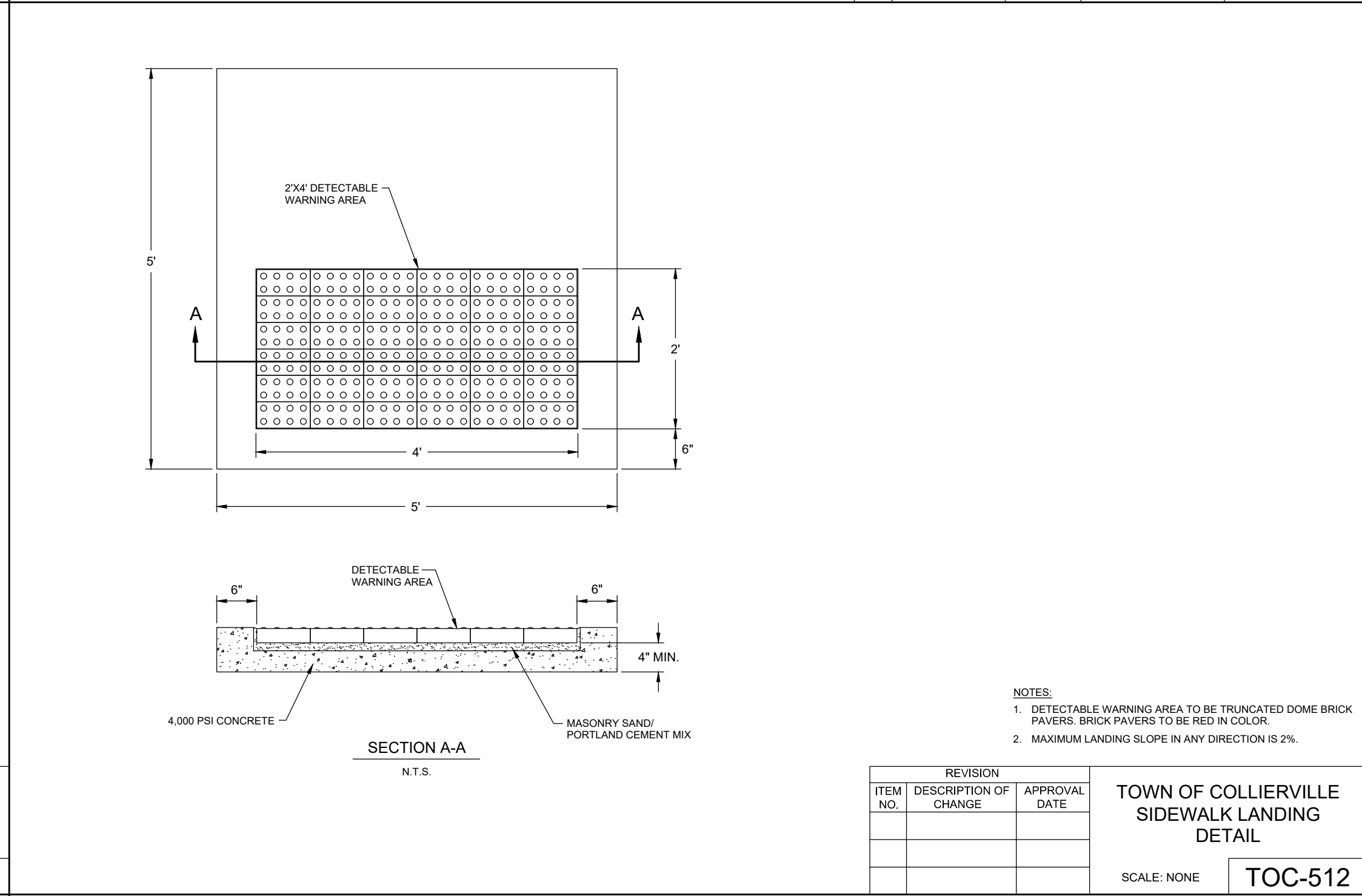
REVISION		
ITEM NO.	DESCRIPTION OF CHANGE	APPROVAL DATE

TOWN OF COLLIERVILLE
VALLEY CURB AND GUTTER



REVISION		
ITEM NO.	DESCRIPTION OF CHANGE	APPROVAL DATE

TOWN OF COLLIERVILLE
CURB RAMP WITH DETECTABLE WARNING SURFACE

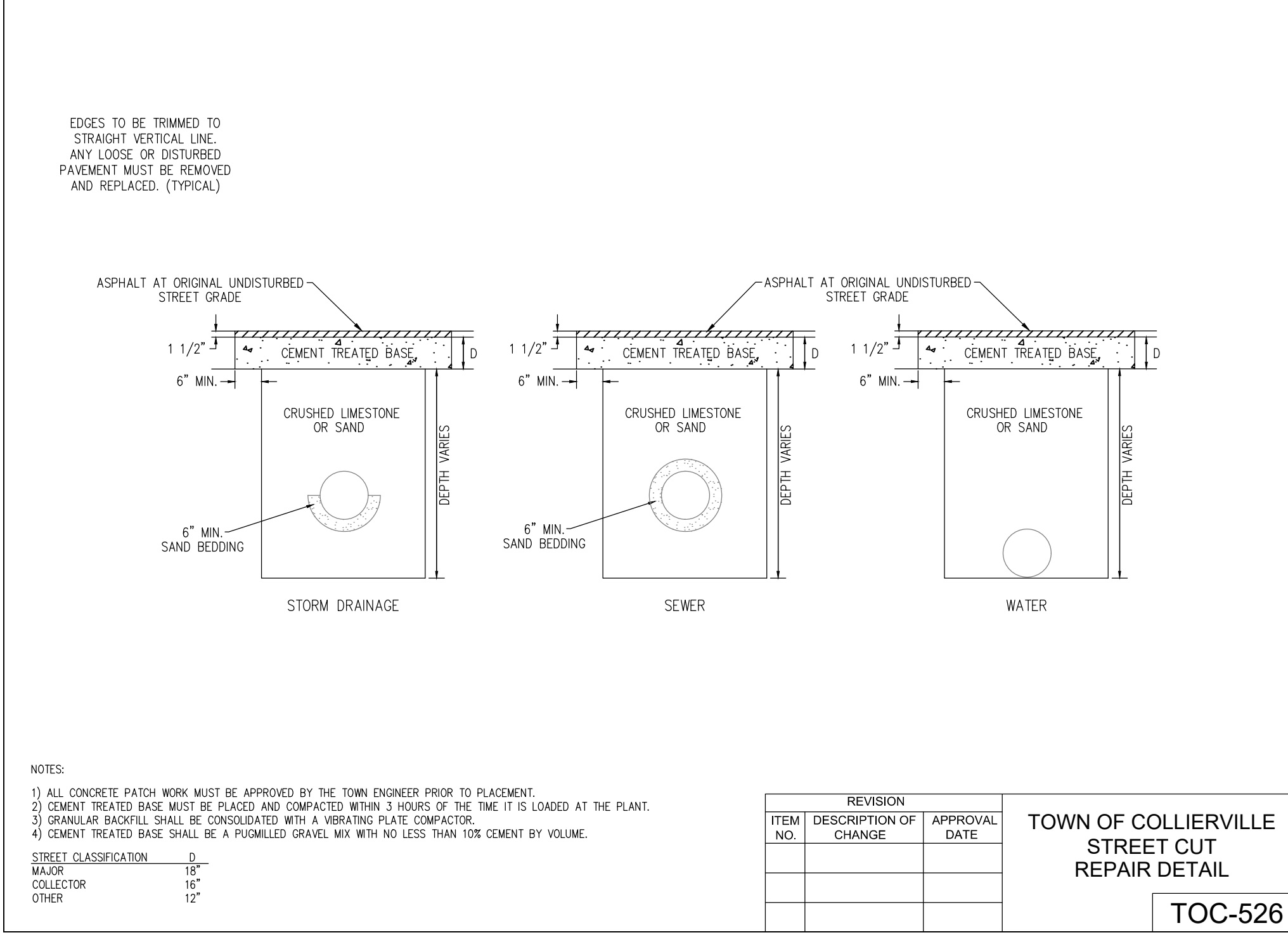


NOTES

- DETECTABLE WARNING AREA TO BE TRUNCATED DOME BRICK PAVERS, BRICK PAVERS TO BE RED IN COLOR.
- MAXIMUM LANDING SLOPE IN ANY DIRECTION IS 2%.

REVISION		
ITEM NO.	DESCRIPTION OF CHANGE	APPROVAL DATE

TOWN OF COLLIERVILLE
SIDEWALK LANDING DETAIL

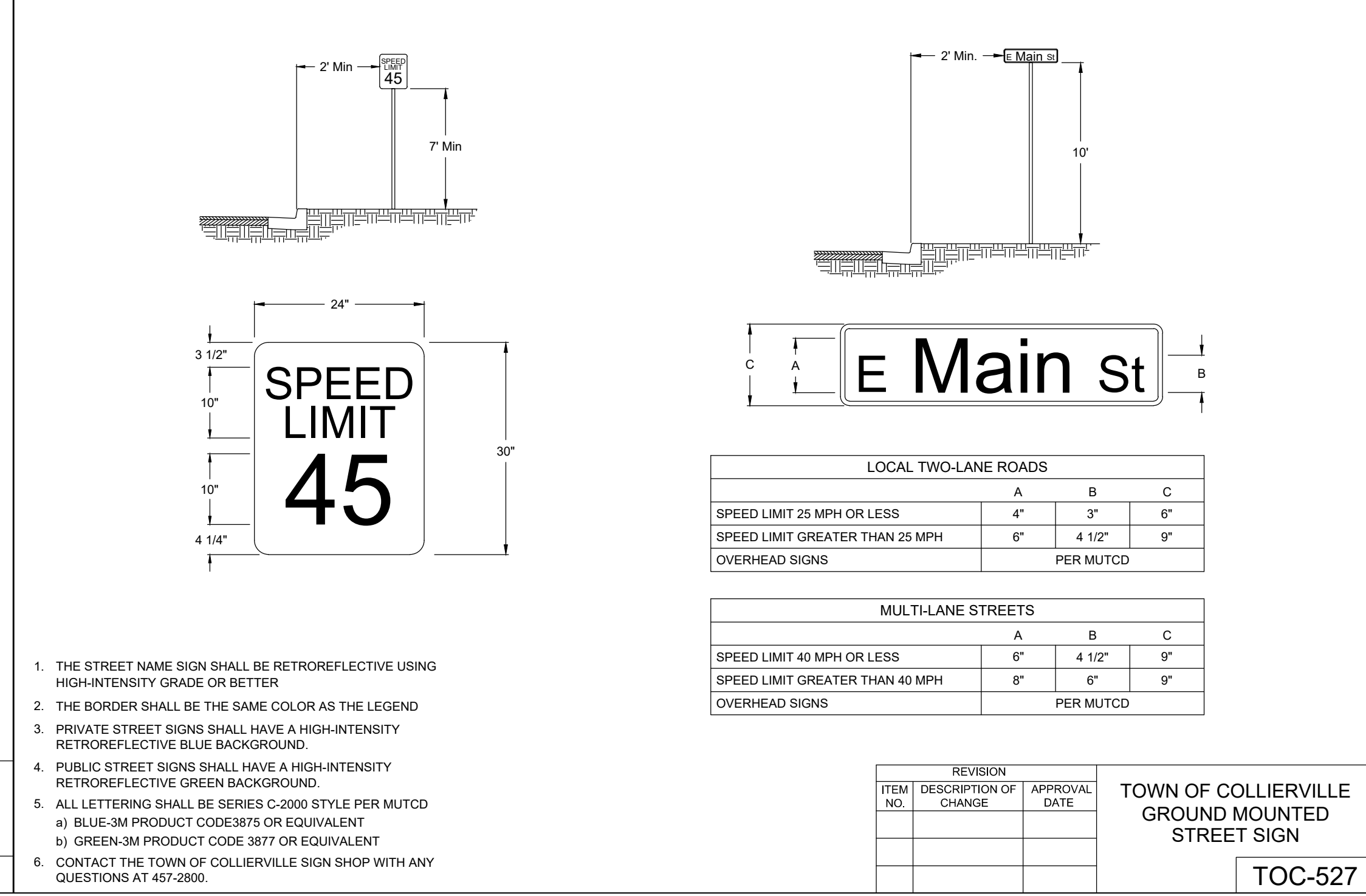


NOTES

- ALL CONCRETE PATCH WORK MUST BE APPROVED BY THE TOWN ENGINEER PRIOR TO PLACEMENT.
- CEMENT TREATED BASE MUST BE PLACED AND COMPACTED WITHIN 3 HOURS OF THE TIME IT IS LOADED AT THE PLANT.
- GRANULAR BACKFILL SHALL BE CONSOLIDATED WITH A VIBRATING PLATE COMPACTOR.
- CEMENT TREATED BASE SHALL BE A FLOWABLE GRAVEL MIX WITH NO LESS THAN 10% CEMENT BY VOLUME.

REVISION		
ITEM NO.	DESCRIPTION OF CHANGE	APPROVAL DATE

TOWN OF COLLIERVILLE
STREET CUT REPAIR DETAIL



NOTES

- THE STREET NAME SIGN SHALL BE RETROREFLECTIVE USING HIGH-INTENSITY GRADE OR BETTER.
- THE BORDER SHALL BE THE SAME COLOR AS THE LEGEND.
- PRIVATE STREET SIGNS SHALL HAVE A HIGH-INTENSITY RETROREFLECTIVE BLUE BACKGROUND.
- PUBLIC STREET SIGNS SHALL HAVE A HIGH-INTENSITY RETROREFLECTIVE GREEN BACKGROUND.
- ALL LETTERING SHALL BE SERIES C-2000 STYLE PER MUTCD.
 - a) BLUE-3M PRODUCT CODE 3875 OR EQUIVALENT
 - b) GREEN-3M PRODUCT CODE 3877 OR EQUIVALENT
- CONTACT THE TOWN OF COLLIERVILLE SIGN SHOP WITH ANY QUESTIONS AT 457-2800.

REVISION		
ITEM NO.	DESCRIPTION OF CHANGE	APPROVAL DATE

TOWN OF COLLIERVILLE
GROUND MOUNTED STREET SIGN