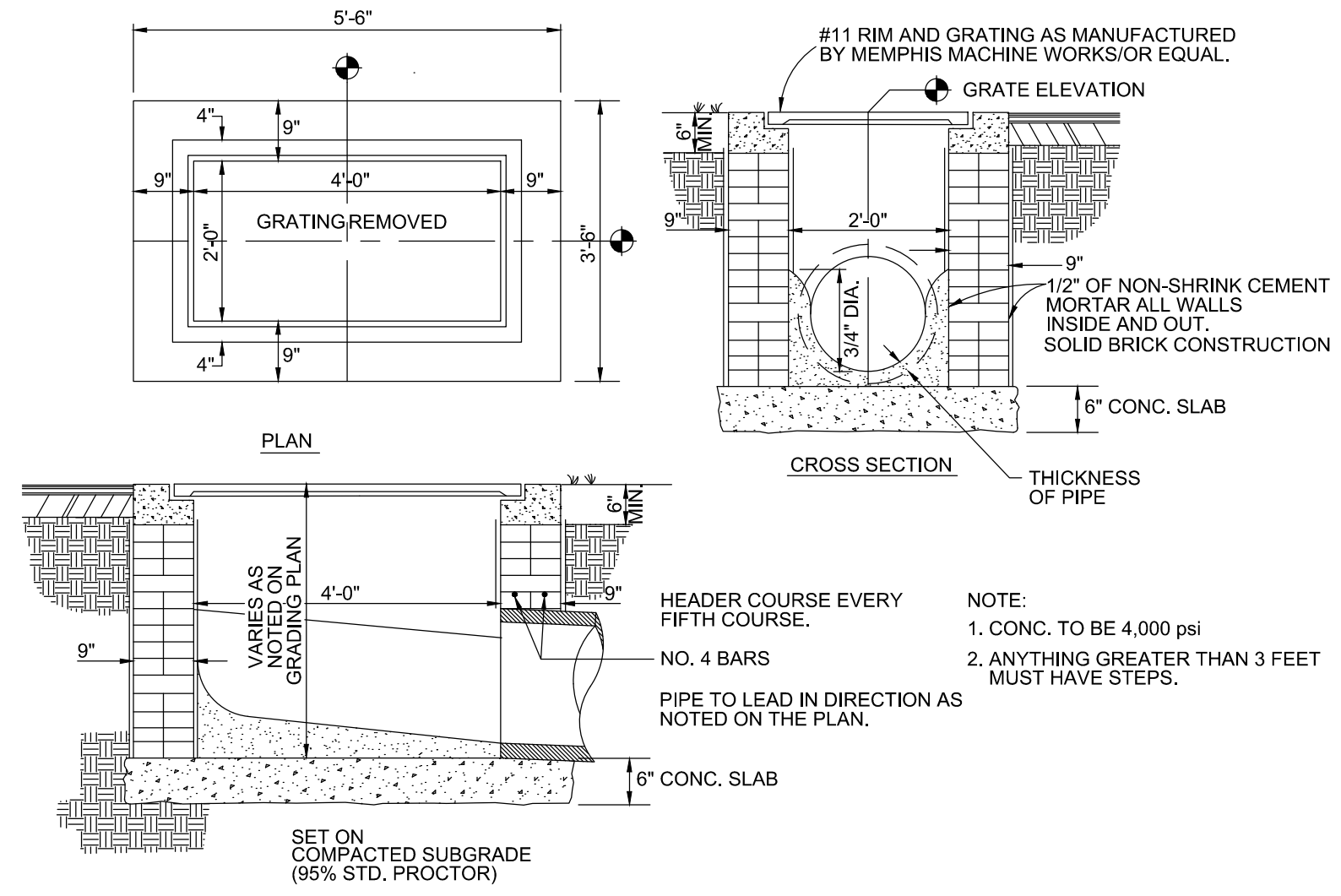


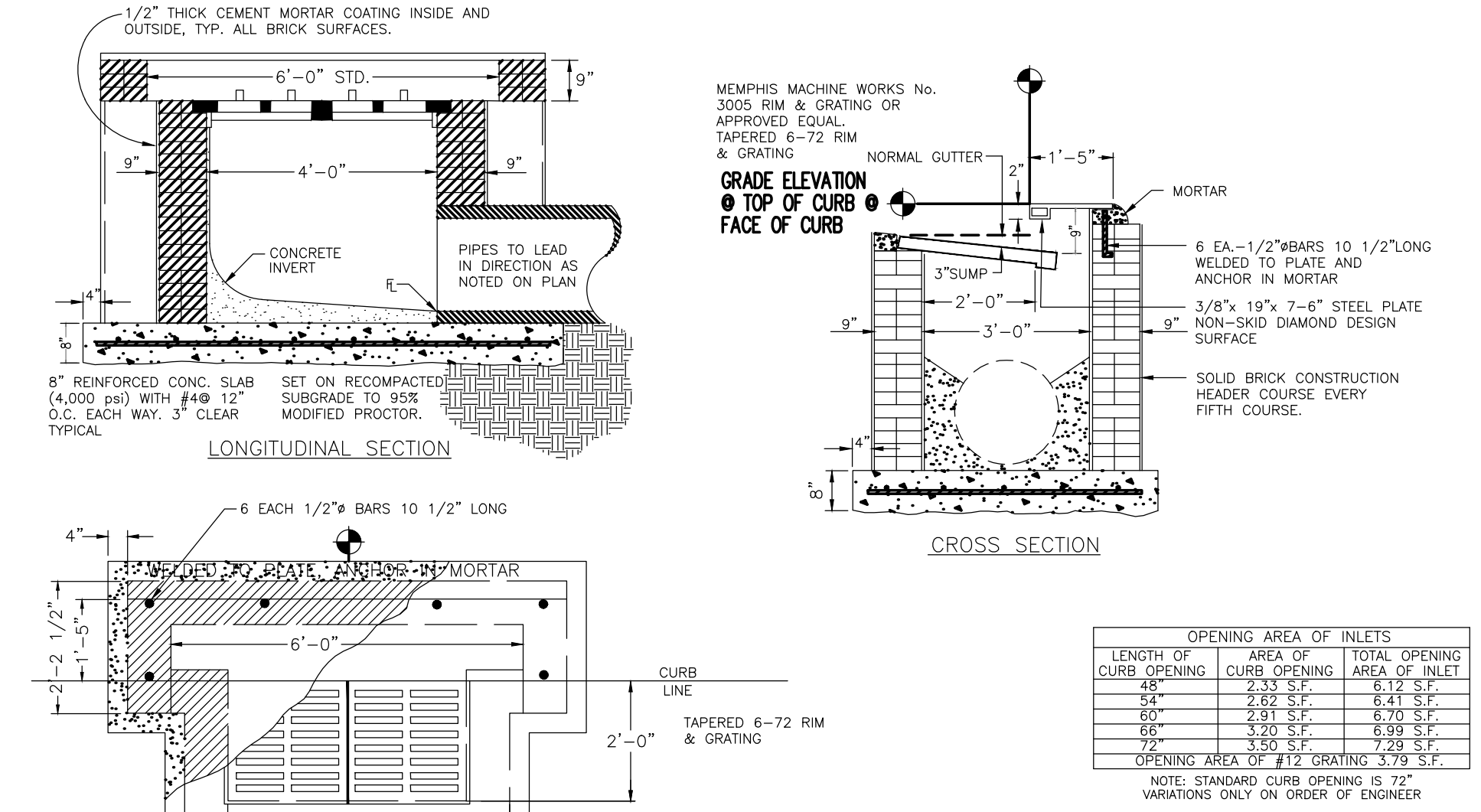
REVISION	ITEM NO.	DESCRIPTION OF CHANGE	APPROVAL DATE

TOWN OF COLLIERVILLE  
NUMBER 10 INLET  
TOC-201



REVISION	ITEM NO.	DESCRIPTION OF CHANGE	APPROVAL DATE

TOWN OF COLLIERVILLE  
NUMBER 11 INLET  
TOC-202

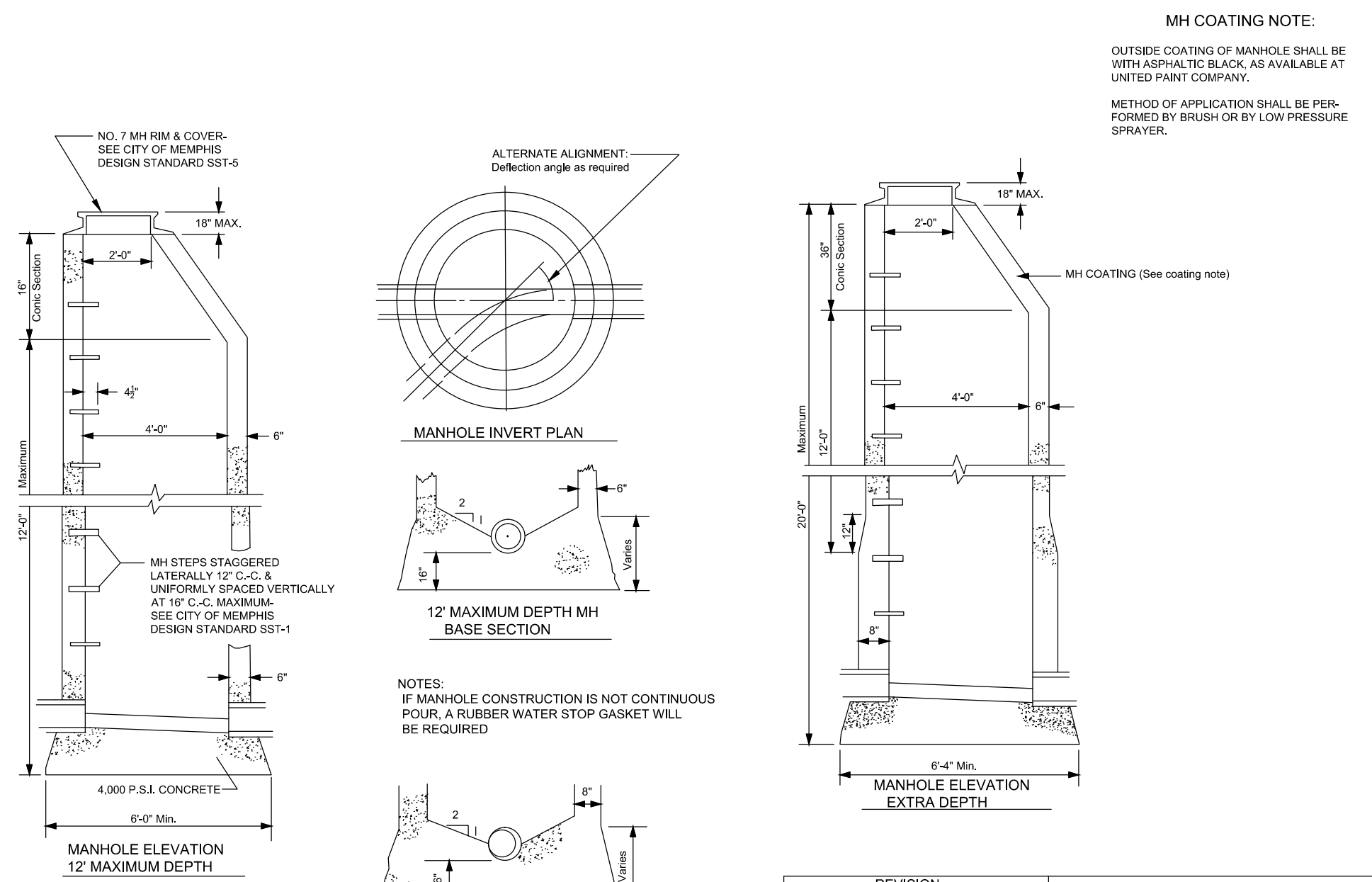


REVISION	ITEM NO.	DESCRIPTION OF CHANGE	APPROVAL DATE

TOWN OF COLLIERVILLE  
6-72 INLET  
TOC-204

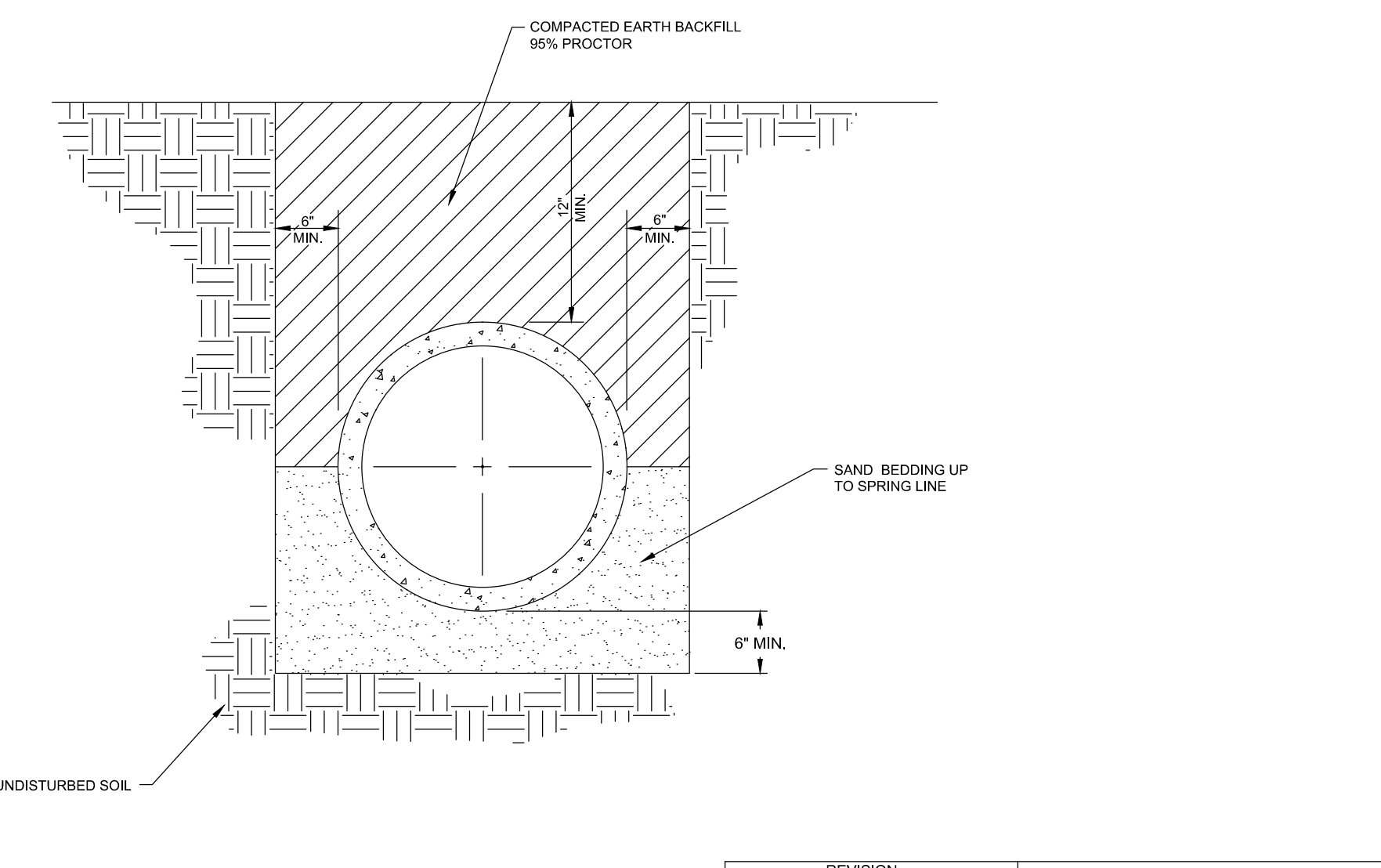
LENGTH OF CURB OPENING	OPENING AREA OF CURB OPENING	TOTAL OPENING AREA OF INLET
6"	2.33 S.F.	6.17 S.F.
8"	2.67 S.F.	6.41 S.F.
10"	3.33 S.F.	6.78 S.F.
12"	4.00 S.F.	7.28 S.F.
15"	5.00 S.F.	8.17 S.F.
18"	6.00 S.F.	9.17 S.F.
24"	8.00 S.F.	12.17 S.F.
30"	11.00 S.F.	16.17 S.F.
36"	14.00 S.F.	20.17 S.F.
42"	18.00 S.F.	25.17 S.F.
48"	22.00 S.F.	30.17 S.F.
54"	27.00 S.F.	36.17 S.F.
60"	33.00 S.F.	43.17 S.F.
66"	39.00 S.F.	50.17 S.F.
72"	45.00 S.F.	57.17 S.F.

NOTE: STANDARD CURB OPENING IS 12" VARIATIONS ONLY ON ORDER OF ENGINEER.



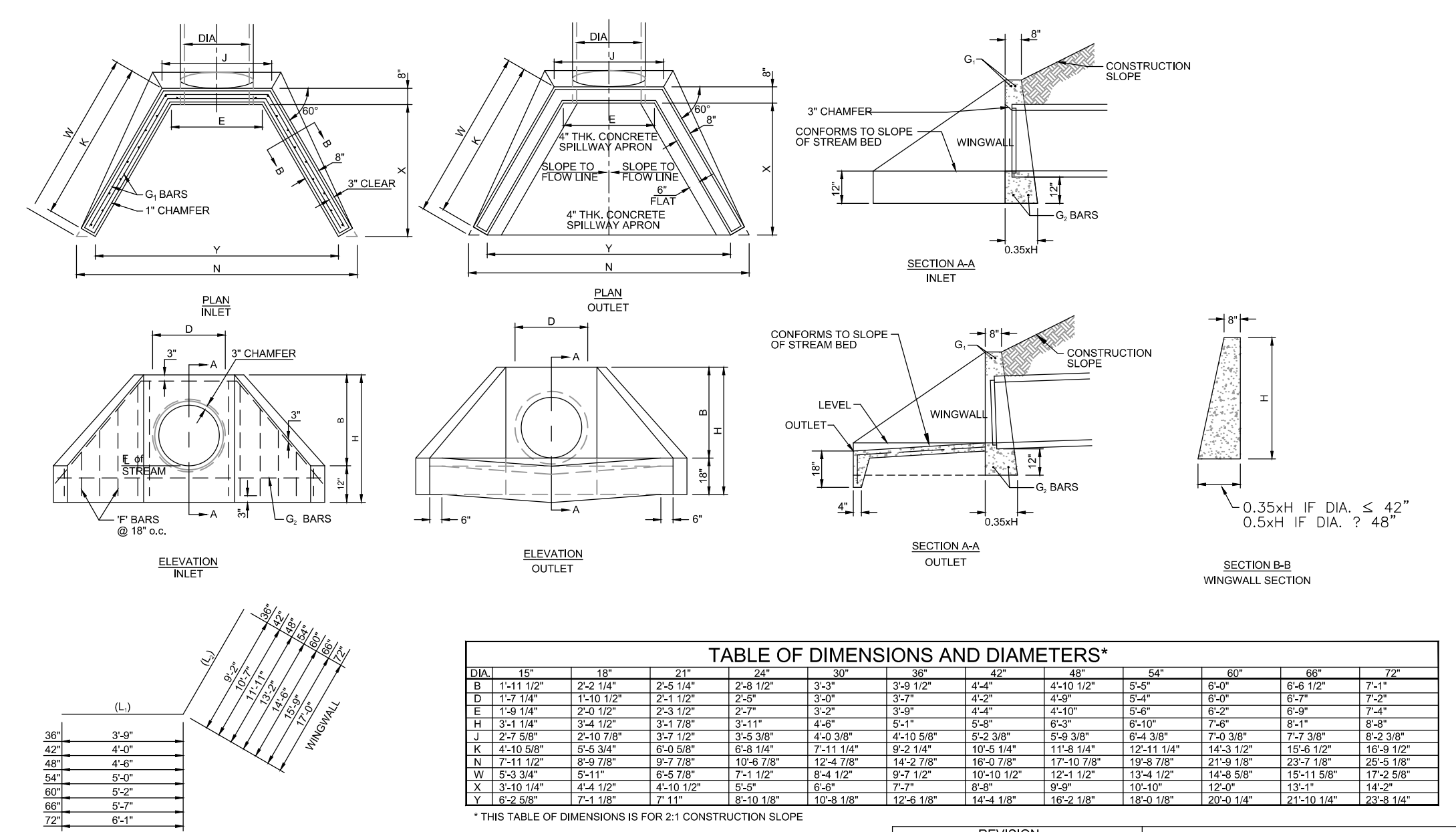
REVISION	ITEM NO.	DESCRIPTION OF CHANGE	APPROVAL DATE

TOWN OF COLLIERVILLE  
MONOLITHIC MANHOLE  
(POURED IN PLACE)  
TOC-206



REVISION	ITEM NO.	DESCRIPTION OF CHANGE	APPROVAL DATE

TOWN OF COLLIERVILLE  
PIPE BEDDING DETAIL FOR CONC.  
DRAINAGE PIPES  
TOC-211



REVISION	ITEM NO.	DESCRIPTION OF CHANGE	APPROVAL DATE

TOWN OF COLLIERVILLE  
TYPE "D" HEADWALL  
TOC-224

TABLE OF DIMENSIONS AND DIAMETERS*											
DIAM.	18"	24"	30"	36"	42"	48"	54"	60"	66"	72"	78"
B	1-11 1/2"	2-0 1/4"	2-8 1/4"	2-8 1/2"	3-0"	3-8 1/2"	4-4"	4-10 1/2"	5-0"	6-0"	6-6 1/2"
D	1-2 1/4"	1-10 1/2"	2-4 1/2"	2-4 1/2"	2-6"	3-0"	3-6"	4-2"	4-8"	5-4"	6-0"
E	1-8 1/4"	2-0 1/2"	2-8 1/2"	2-8 1/2"	3-0"	3-6"	4-2"	4-8"	5-4"	6-0"	6-6 1/2"
F	3-1 1/4"	3-4 1/2"	3-1 7/8"	3-1 1/4"	4-0"	4-6"	5-2"	6-0"	6-6 1/2"	7-2"	7-8"
G	2-0 5/8"	2-0 1/8"	3-0 3/8"	3-0 3/8"	4-0 3/8"	4-0 3/8"	5-0 3/8"	6-0 3/8"	6-0 3/8"	7-0 3/8"	8-0 3/8"
H	4-0 5/8"	5-0 5/8"	6-0 5/8"	6-0 5/8"	7-1 1/8"	8-1 1/8"	9-1 1/8"	10-1 1/8"	11-1 1/8"	12-1 1/8"	13-1 1/8"
J	1-11 1/2"	2-0 1/4"	2-8 1/4"	2-8 1/2"	3-0"	3-8 1/2"	4-4"	4-10 1/2"	5-0"	6-0"	6-6 1/2"
K	5-3 3/8"	5-1 1/2"	6-5 7/8"	7-1 1/2"	8-4 1/2"	9-2 1/2"	10-1 1/2"	11-4 1/2"	12-2 5/8"	13-1 5/8"	14-5 5/8"
L	3-0 1/4"	3-4 1/2"	4-13 1/2"	4-6"	5-0"	5-6"	6-0"	6-6"	7-2"	7-8"	8-4"
M	6-2 5/8"	7-1 1/8"	7-1 1/8"	8-10 1/8"	10-6 1/8"	12-6 1/8"	14-6 1/8"	16-6 1/8"	18-6 1/8"	20-6 1/8"	22-6 1/8"

\* THIS TABLE OF DIMENSIONS IS FOR 2:1 CONSTRUCTION SLOPE.