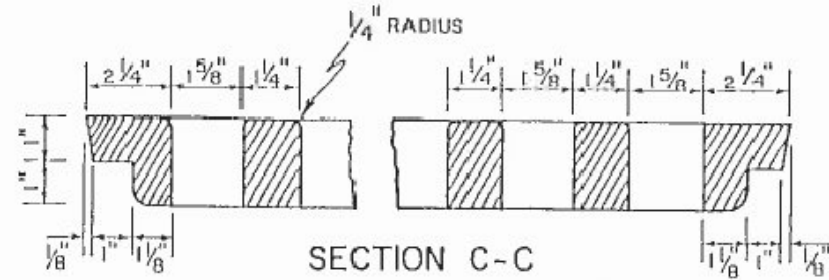
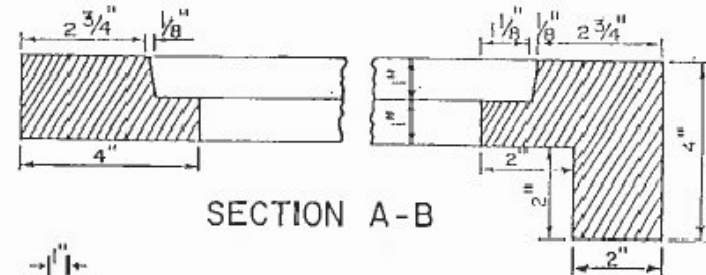


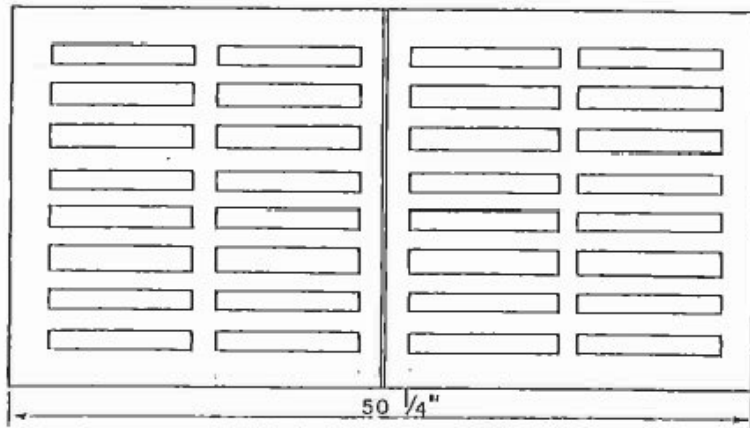
HALF PLAN OF RIM



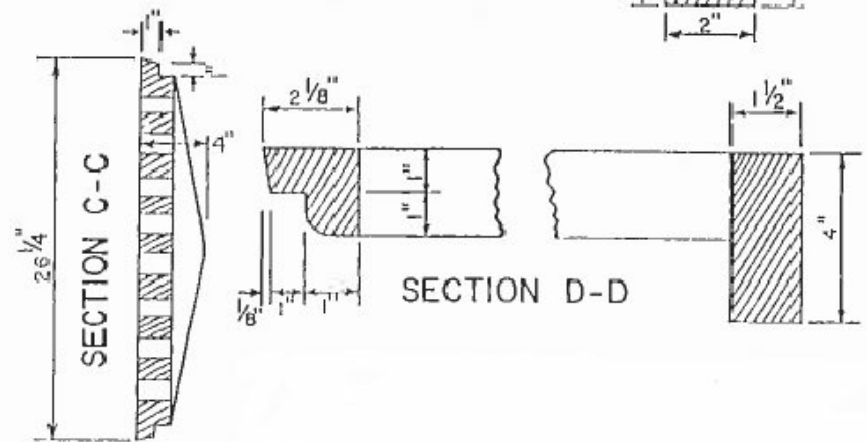
SECTION C-C



SECTION A-B

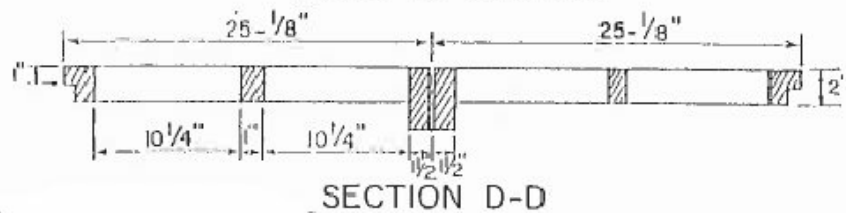


PLAN OF GRATING



SECTION C-C

SECTION D-D



SECTION D-D

REVISION		
ITEM NO.	DESCRIPTION OF CHANGE	APPROVAL DATE

TOWN OF COLLIERVILLE
STANDARD RIM &
GRATING #11

TOC-209